

THE NORFOLK COMMUNITY FOUNDATION CHARITY CONCERT

A Very Special Musical Evening
with **Cal Dodd** and friends

Saturday, October 3, 2009

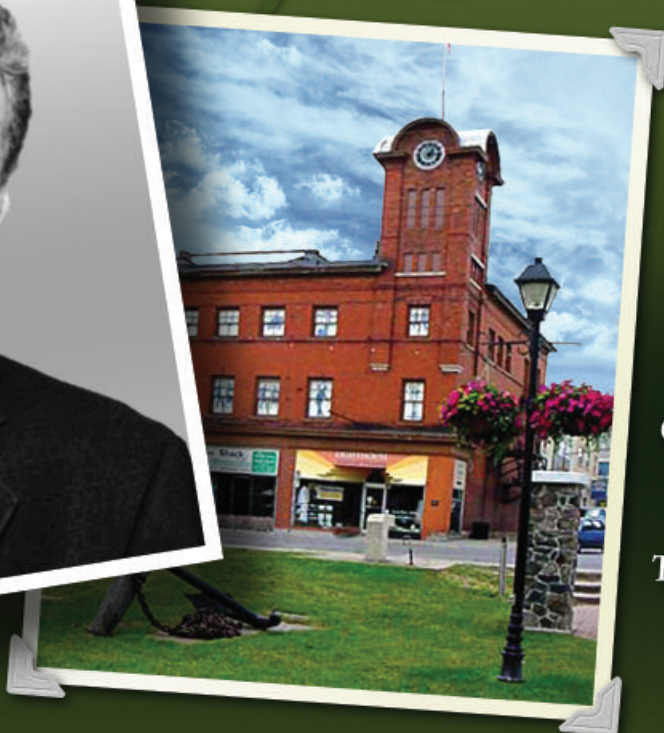
The Lighthouse Festival
Theatre, Port Dover

Live musical performance
by Port Dover's own **Cal Dodd**
and 11 of Canada's most celebrated
musicians, including Guido Basso

Live auction – items include
magnificent art, jewellery
and vacations

Complimentary martini bar,
wine service and hors d'oeuvres

Tickets: \$100 per person
(includes tax receipt for \$50).
All proceeds go to the Norfolk
Community Foundation



NORFOLK
COMMUNITY
FOUNDATION



Presented by ScotiaBank
On behalf of the Norfolk Community Foundation



THE NORFOLK COMMUNITY FOUNDATION CHARITY CONCERT

The Norfolk Community Foundation along with charter sponsor, Scotiabank, will host this very special evening aimed at bringing together the people of Norfolk County to share our good fortunes with those in need. Our goal is to raise money for the ongoing charitable initiatives of the Foundation and help make Norfolk a better place to live.

Live Musical Performance by Cal Dodd & Friends

Highlighting this charity fund-raising event for the Norfolk Community Foundation is a live performance by Port Dover's own Cal Dodd, one of Canada's most successful singers for more than three decades. Hear classic songs from Cal's new CD as he takes to the Lighthouse Festival Theatre stage with an 11-piece band comprising many of Canada's greatest musicians, including:

Cal Dodd – vocals

Guido Basso – Flugel Horn

Johnny Johnson – Saxophone

Vern Dorge – Saxophone

Perry White – Saxophone

Russ Little – Trombone

Gord Myers – Trombone

Dave Dunlop – Trumpet

Tom Szczesniak – Piano

Paul Novotny – Bass

Brian Barlow – Drums

Jake Langley – Guitar



Live Auction with Fabulous Items!

In addition to this star-studded musical performance, the evening will also include a live auction, featuring exotic and extraordinary items, including a beautiful diamond necklace and a Tuscan vacation for two. Don't miss the suspense and excitement of the bid!

Tickets are \$100 each

(for which you'll receive a \$50 tax credit receipt) and include:

- Admission: doors/bars open at 7:00 p.m. Saturday, October 3, 2009
- Live performance by Cal Dodd with 11-piece band (8:00 and 9:30 p.m.)
- Live Auction featuring fabulous items & merchandise (8:50 and 10:20 p.m.)
- Complimentary Martini Bar
- Complimentary Oyster Bar
- Complimentary Wine Service
- Complimentary hors d'oeuvres

Don't be disappointed – book today!

To purchase tickets online visit www.lighthouse theatre.com
or purchase tickets by phone at 519-583-2221.

THE NORFOLK COMMUNITY FOUNDATION

The Foundation's objective is to accumulate capital and earn investment income with which it makes charitable donations to deserving individuals and organizations throughout Norfolk County. Since being formed in 1986, the Foundation has accumulated more than \$1.4 million in capital, which it has dispersed as donations and scholarships to a wide range of recipients, including:

- The Norfolk General Hospital Cat Scan
- Norfolk County Youth Soccer Park
- SCS gymnasium
- Norview Lodge garden
- Long Point Conservation Authority
- \$10,000 annually for local high school scholarships

Again, net proceeds of all monies raised at this event will go directly towards funding a wide range of programs and investments which will enrich the quality of life and accomplishments for Norfolk County residents

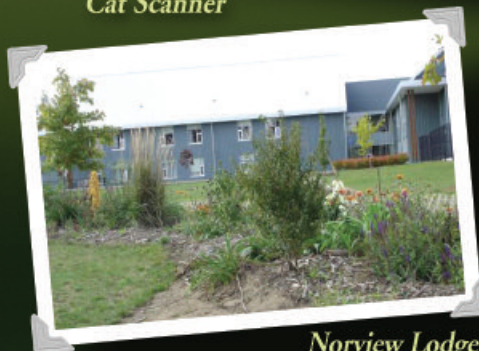
Ticket No.



For more details visit our website at
norfolkcommunityfoundation.com



*Norfolk General Hospital
Cat Scanner*



Norview Lodge garden



Norfolk County Youth Soccer Park